



# Brake Roller / Speed Controller

## Product Introduction

[www.damonroller.com](http://www.damonroller.com)

Version: 202407V5(1)-Eu(en)

# About Damon Industry



## ONE OF THE GLOBAL LEADING MANUFACTURER OF CONVEYOR ROLLERS —Providing European local manufacturing, sales and services

Damon Industry provides millions pieces of rollers all over the world every year for many industries. With decades' professional experience of conveyor roller, Damon Industry provides support for global companies to achieve efficient logistics.

Damon Industry, since its establishment, has always been committed to providing the highest quality conveyor rollers and services for a wide range of industries.

Damon Industry has manufacturing bases in Asia, America and Australia, and providing local manufacturing, sales and services. Damon Industry has also set up a manufacturing base in Europe now, and has always been committed to be a high-quality supplier of conveyor rollers.

Damon Industry conveyor rollers are used in a variety of industries including food distribution, pharmacy, tobacco, clothing, postal express, logistics and distribution, manufacturing, rubber and airport industries. Damon Industry provides a vast range of reliable and innovative roller solutions. Our dedicated and experienced team of sales people and application engineers' work with our clients to ensure the products are suitable for the application and help users improve efficiency and reduce costs. We will always focus on supplying outstanding conveyor roller solutions to local and global customers.

Globally we have gained the consistent trust of our customers. These customers include influential equipment manufacturing companies and logistics system integrators. We provide customers with over 40 different products covering a variety of specifications to suit user's different requirements. The customers of using Damon Industry rollers are over Europe, Asia, America, Australia and Africa, and this range is gradually expanding.

We not only provide high-quality rollers, but also provide a full range of quality services for customers all over the world. From introducing the complete information based ERP management system to the independent research and development of the online roller dimensional drawing system service, we are viewing our market from a brand new perspective and are pleased to share our ideas of quality and innovation with every customer.

With the mission of "Creating value for customer's logistics systems", Damon Industry will strive for the vision of becoming "The most influential core components supplier and service provider for the global materials handling industry".

Brake rollers in gravity racks, also known as speed reducers / speed controllers, mainly for eliminating acceleration of gravity by slowing loaded pallets, helping pallets' steady and smooth movement on racks, to ensure safety of operators and goods.

Self-adaption to different weights, Steady braking force, Maintenance-free, Zero energy consumption.

## Internal Brake Roller

### ( BR50/BR60 ) Internal Brake Roller

03-04



Type of application	Cartons, work bins, light objects etc
Weight range	10~100kgs

### (BR80) Internal Brake Roller

05-06



Type of application	Wooden pallets, plastic pallets
Weight range	200~1500kgs

## External Brake Roller

### (BE120) External Brake Roller

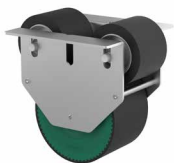
07-08



Type of application	Wooden pallets, plastic pallets
Weight range	200~1000kgs

### (BT120) Tandem Brake

09-10



Type of application	European standard ,Australian standard pallets,Nine-feet pallets.
Weight range	200~1000kgs

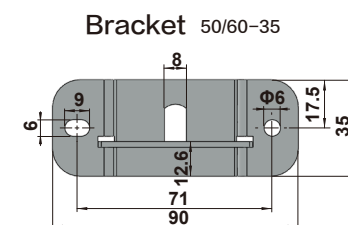
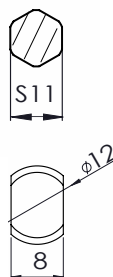
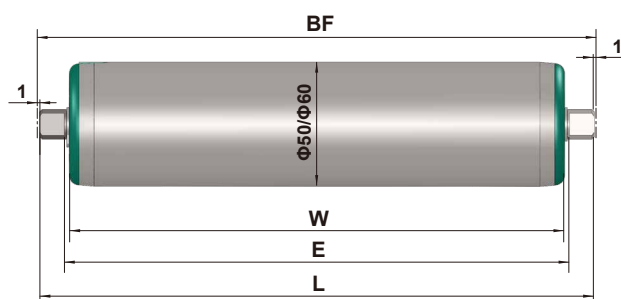
# Internal Brake Roller ( BR50/BR60)

- Suitable for hard and flat bottom object, such as cartons, work bins etc.



## Dimensional Drawing

BR50/60



brackets 2pcs, bolts & nuts 4 sets

Model	D*T	L Min	L Max			
BR50/AA-S11	50x1.5	145	1250	BF=E	E=L-20	W=L-24
BR50/AA-12	50x1.5	145	1250	BF=L+2	E=L-20	W=L-24
BR60/AA-12	60x1.5	145	1300	BF=L+2	E=L-20	W=L-24

## Specifications

Model	D*T	Shaft	Weight Range	Tube	
				Steel, zinc plated	SS304
BR50/AA-S11	50x1.5	S11 Hex	10-60kg	√	√
BR50/AA-12	50x1.5	b/h = 8/12 Milled Flats	10-60kg	√	√
BR60/AA-12	60x1.5	b/h = 8/12 Milled Flats	20-100kg	√	

\* BR50/AA has 2mm PU sleeve lagging providable

## Part No.

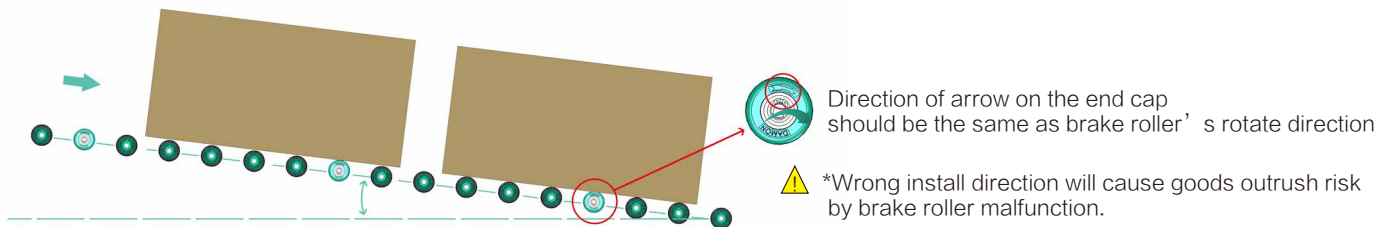
<b>BR</b>	<b>50</b>	<b>/</b>	<b>AA</b>	<b>—</b>	<b>S11</b>	<b>—</b>	<b>Z</b>	<b>—</b>	<b>550</b>
Model	OD				Shaft		Tube		L dimension (mm)
BR	50				S11: Hex shaft		U: Steel, zinc-plated, with PU sleeve (2mm)		
	60				12: Milled flats		Z: Zinc plated		
							S: Stainless steel (304)		



## Installation Instructions



1. Fix one bracket with bolts and nuts at the inner side of rack.
2. Put the milled flat in the opening socket of fixed bracket, put the other end into another bracket, fix it with bolts and nuts.
3. Brake roller's surface should be above gravity rollers' surface 1–2mm to ensure the speed controlling effect.



## Suggestion

1. Gravity roller rack's slope range as 3~12° . Object weight please check specifications table.
2. When object entering roller rack with speed, 2~3 pcs extra brake rollers are necessary at the entrance.
3. Pitch of adjacent brake rollers should be less than the length of the goods in flow direction, avoid accelerated speed and impact during flowing.
4. Please apply few brake rollers in actual weight and slope on gravity rack for test before bulk installation.
5. When you meet special application (heavy weight big slope or light weight small slope), please contact us for consultation.

\*Environmental Temperature: -5°C ~ +40°C, Humidity: 30% ~ 70% RH without condensation.

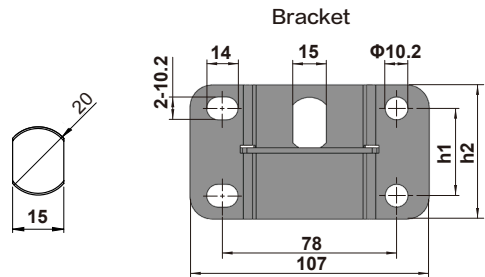
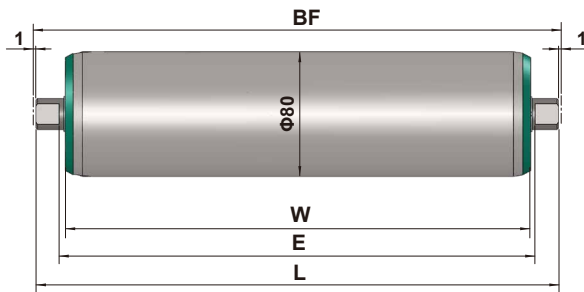
## Internal Brake Roller ( BR80)

- Suitable for wooden pallets, plastic pallets.



## Dimensional Drawing

BR80



brackets 2pcs, bolts &amp; nuts 8 sets

Model	h1	h2
80-55	30.3	55
80-60	39	60

Model	D*T	L Min mm	L Max mm			
BR80/AA	80x2.5	265	1350	BF=L+2	E=L-30	W=L-38
BR80/BA	80x2.5	340	1350	BF=L+2	E=L-30	W=L-38
BR80/AS	80x2.5	265	1350	BF=L+2	E=L-30	W=L-38

## Specifications

Model	D*T	Shaft	Weight Range	Tube	
				Steel, zinc plated	Steel, zinc plated, knurled surface
BR80/AA	80x2.5	b/h = 15/20	200-1000kg	√	√
BR80/BA			1000-1500kg	√	√
BR80/AS		Milled Flats	200-1000kg	√	√

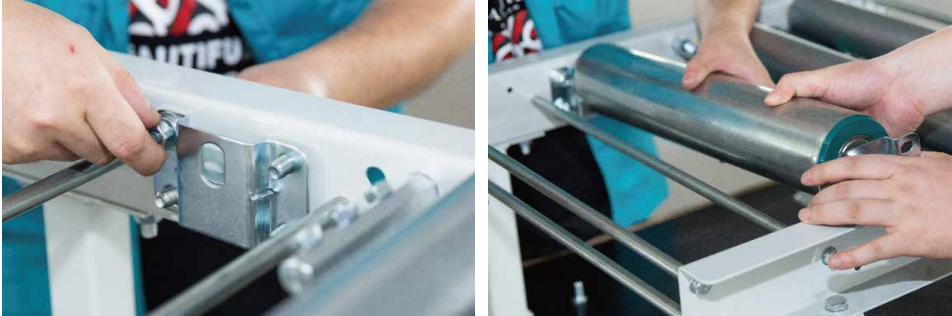
☆ Knurled surface for better frictional force.

\*BR80/AS is suitable for LIFO push-back.

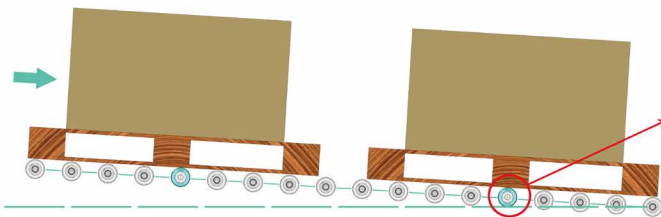
## Part No.

<b>BR</b>	<b>80</b>	<b>/</b>	<b>A</b>	<b>A</b>	<b>—</b>	<b>20</b>	<b>—</b>	<b>Z</b>	<b>—</b>	<b>1248</b>
Model	OD		Object Weight	Direction of Rotation		Shaft Dia.		Tube		L dimension (mm)
BR	80		A : 200~1000kgs B : 1000~1500kgs	A:Standard S:Single Direction		20:Milled Flats		Z:Steel, zinc plated K:Knurled surface		

## Installation Instructions



1. Fix one bracket (opening socket upward) with bolts and nuts at the inner side of rack.
2. Put milled flat in opening socket of fixed bracket, put the other end into another bracket, fix it at the inner side of rack with bolts and nuts.
3. Brake roller's surface should be above gravity rollers' surface 1–2mm to ensure the speed controlling effect.



Direction of arrow on the end cap should be the same as brake roller's rotate direction



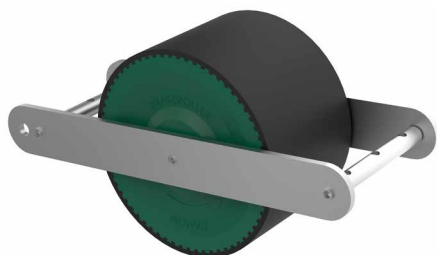
\*Wrong install direction will cause goods outrush risk by brake roller malfunction.

## Suggestion

1. Gravity roller rack's slope range as  $1.5^{\circ}$ ~ $2.3^{\circ}$ . Pallet weight please check specifications table.
2. Installation pitch of brake rollers should be as the length of the pallet, no impact or accelerated speed is permitted.
3. Pitch of adjacent brake rollers should be less than the depth of pallet in flow direction, avoid accelerated speed and impact during flowing.
4. Please apply few brake rollers in actual weight and slope on gravity rack for test before bulk installation.
5. When you meet special application (heavy weight big slope or light weight small slope), please contact us for consultation.

\*Environmental Temperature:  $-5^{\circ}\text{C}$  ~  $+40^{\circ}\text{C}$ , Humidity: 30% ~ 70% RH without condensation.

# External Brake Roller ( BE120)

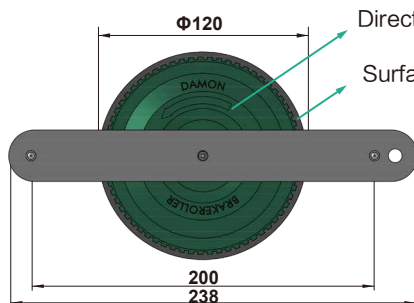


- Suitable for wooden pallets, plastic pallets.



## Dimensional Drawing

BE120

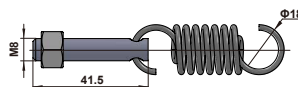
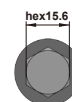
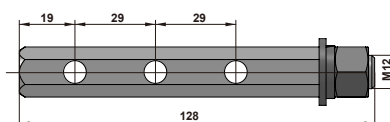


Direction of arrow on the end cap should be the same as brake roller's rotate direction.

Surface material: PU



## Accessories



hex rods 2pcs, bolts with hole 6pcs,  
springs 6pcs, nuts 8 pcs, washers 4pcs

## Specifications

Model	Weight Range
BE120/AA	200~500kg
BE120/BA	500~1000kg

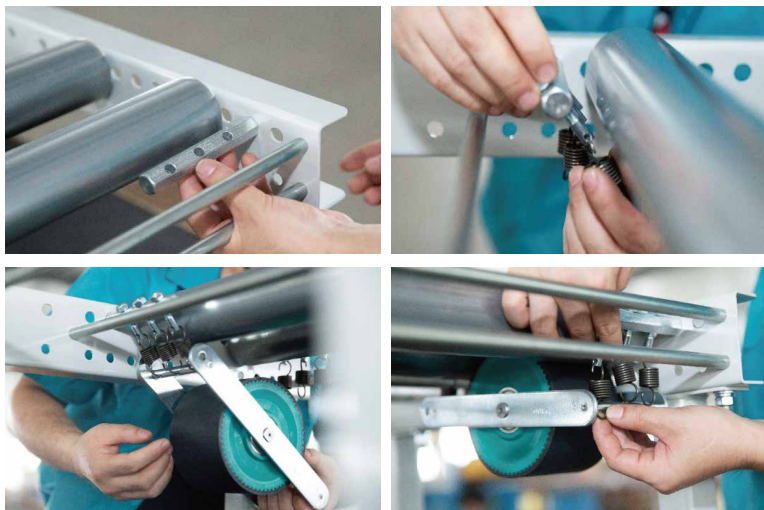
## Part No.

BE	120	A	A
Model	OD	Object Weight	Direction of Rotation
BE	120	A : 200~500kgs B : 500~1000kgs	A:Standard

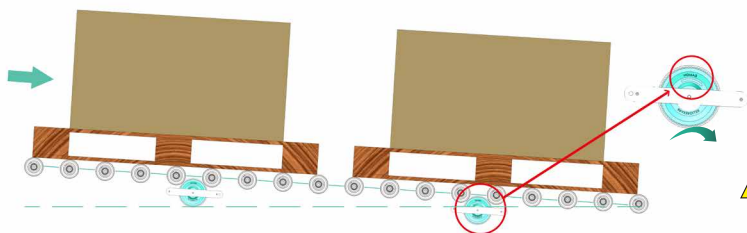
\* Mounting accessories are included with the brake roller.



## Installation Instructions



1. Fix the hex rod with nut at the inner side of gravity roller rack.
2. Put 3pcs bolts with hole through 3 round holes on the hex rod, fix them with nuts, then install 3pcs springs at the end holes of bolts. same procedure for another hex rod and 3pcs bolts with hole, 3pcs spring by the other side of gravity roller.
3. Connect 3pcs springs with the side 3 holes axle, then the same way for the springs and 3 holes axle at another side. (You may adjust the tension force between brake roller and gravity rollers by screwing the nuts at the bolts with hole.)



Direction of arrow on the end cap should be the same as brake roller's rotate direction



\*Wrong install direction will cause goods outrush risk by brake roller malfunction.

## Suggestion

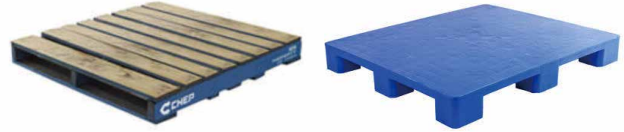
1. Gravity roller rack's slope range as  $1.5^{\circ}$ ~ $2.3^{\circ}$ . Pallet weight please check specifications table.
2. Pitch of adjacent brake rollers should be less than the depth of pallet in flow direction, avoid accelerated speed and impact during flowing.
3. Please apply few brake rollers in actual weight and slope on gravity rack for test before bulk installation.
4. When you meet special application (heavy weight big slope or light weight small slope), please contact us for consultation.

\*Environmental Temperature:  $-5^{\circ}\text{C}$  ~  $+40^{\circ}\text{C}$ , Humidity: 30% ~ 70% RH without condensation.

# External Brake Roller ( BT120)

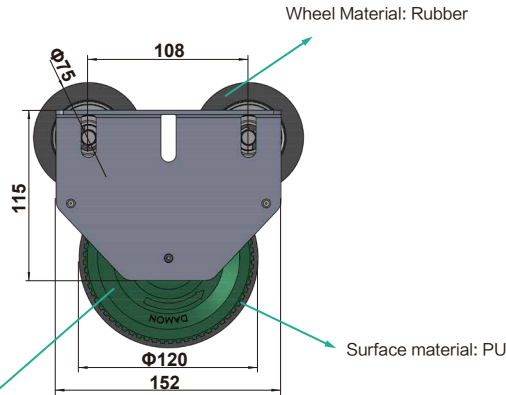
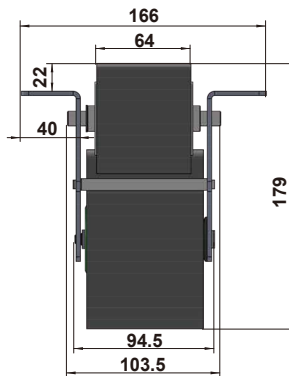


- Suitable for European standard / Australian standard pallets, Nine-foot pallets.



## Dimensional Drawing

BT120



Direction of arrow on the end cap should be the same as brake roller's rotate direction



\*Wrong install direction will cause goods outrush risk by brake roller malfunction.

## Specifications

Model	Weight Range
BT120/AA	200~500kg
BT120/BA	500~1000kg

## Order Example

\* BT120 tandem brake is suitable for pallet wheel track.

<b>BT</b>	<b>120</b>	<b>A</b>	<b>A</b>
Model	OD	Object Weight	Direction of Rotation
BT	120	A : 200~500kgs B : 500~1000kgs	A:Standard

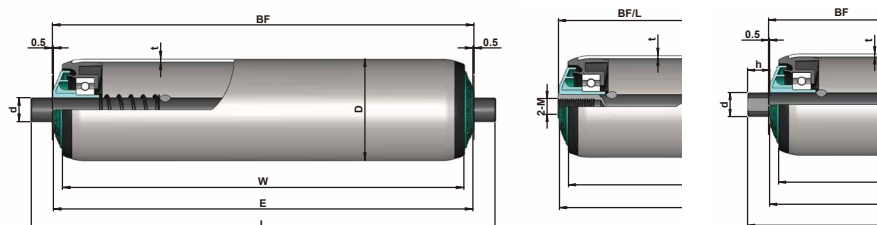
## Suggestion

- 1.Gravity wheel flow rack's slope range as 1.5~2.3° .Pallet weight please check specifications table.
- 2.Pitch of adjacent brake rollers should be less than the depth of pallet in flow direction, avoid accelerated speed and impact during flowing.
- 3.Please apply few brake rollers in actual weight and slope on gravity rack for test before bulk installation.
- 4.When you meet special application (heavy weight big slope or light weight small slope), please contact us for consultation.

\*Environmental Tempreature: -5℃ ~ +40℃, Humidity: 30% ~ 70% RH without condensation.

## 1200 Series

### Polymer Housing Non-Driven Roller



Spring loaded

Internal Thread

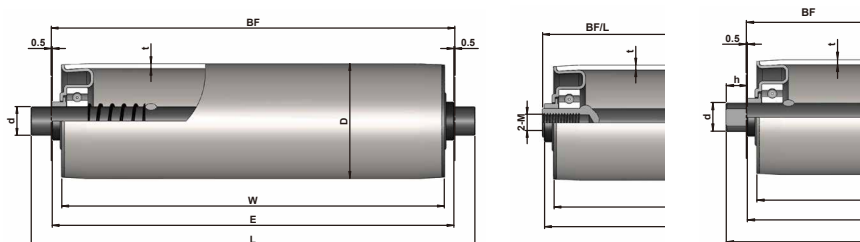
Milled Flats

- Design of polymer bearing housing and end cap
- Beautiful, quiet operation
- Light running is available
- Environmental Temperature:  $-5^{\circ}\text{C} \sim +40^{\circ}\text{C}$   
Humidity:  $\text{RH} \geq 30\%$

D	t	Shaft	Tube	
			Steel Z/P	SS
$\Phi 50$	1.5	11hex, $\Phi 8/10/12/14$	√	√
$\Phi 60$	2.0	11hex, $\Phi 10/12/14/15$	√	√

## 1800 Series

### Steel Housing Non-Driven Roller



Spring loaded

Internal Thread

Milled Flats

- Steel bearing housing, precision bearing, sturdy and durable
- Many options of diameter, wide range of load capacity
- Environmental Temperature:  $-30^{\circ}\text{C} \sim +80^{\circ}\text{C}$

D	t	Shaft	Tube	
			Steel Z/P	SS
$\Phi 50$	1.5	$\Phi 12/15$	√	√
$\Phi 60$	2.0	$\Phi 12/15/20$	√	√

\* Please check weight burden of conveyor roller, make sure it comply with our load capacity diagram in catalogue.



## DAMON INDUSTRIAL EUROPE SRL

Address: Apahida, Libertatii Str., No. 21, 407035, Cluj, Romania

Tel: 0040-364130050

Email: [sales@damonroller.ro](mailto:sales@damonroller.ro)

Web: [www.damonroller.com](http://www.damonroller.com)

### China

ZHEJIANG DAMON INDUSTRIAL EQUIPMENT CO., LTD

Address: Shangqiang Industrial Park, Daixi, Huzhou, China

Tel: +86-572-3826 065 / 3826 066

Fax: +86-572-3826 080

Email: [sales@damonroller.com](mailto:sales@damonroller.com)

Web: [www.damonroller.com](http://www.damonroller.com)

### Australia

DAMON Australia

Address: 30 Grasslands Avenue Craigieburn VIC 3064, Australia

Tel: 0061-393337034

Fax: 0061-393084896

Email: [info@damon-group.com.au](mailto:info@damon-group.com.au)

Web: [www.damon-group.com.au](http://www.damon-group.com.au)

### America

DA Roller Corporation

Address: 4664 Brate Dr, Suite 400, West Chester, Oh 45011, USA.

Tel: 001-5138981850

Email: [dateam@daroller.com](mailto:dateam@daroller.com)

Web: [www.daroller.com](http://www.daroller.com)

### Japan

Kyowa Manufacturing Co., Ltd.

Address: 570-10 Kubota-cho, Kasai-city, Hyogo pref. 675-2364 JAPAN

Tel: 0081-790420601

Fax: 0081-790424895

Email: [sales@pulseroller.com](mailto:sales@pulseroller.com)

Web: [www.pulseroller.com](http://www.pulseroller.com)

### Singapore

Rollflex Pte. Ltd.

Address: Blk 22, Woodlands Link, #04-70, Singapore 738734

Tel: 0065-62570811

Fax: 0065-62573811

Email: [sales.sg@rollflexmfg.com](mailto:sales.sg@rollflexmfg.com)

Web: [www.rollflexmfg.com](http://www.rollflexmfg.com)

### Indonesia

PT. Rollflex Manufacturing Indonesia

Address: Taman Tekno BSD, Sektor XI Blok H-11 No. 7 Serpong, Tangerang 15314

Tel: 006221-36720399

Fax: 006221-36720388

Email: [sales.id@rollflexmfg.com](mailto:sales.id@rollflexmfg.com)

Web: [www.rollflexmfg.com](http://www.rollflexmfg.com)

### Malaysia

Rollflex (M) Sdn.Bhd.

Address: Lot58908, No.3399, Jalan Pekeliling Tanjung 27/2 Kawasan Perindustrian Indahpura, 81000 Kulai, Johor, Malaysia.

Tel: 006012-7272896

Email: [sales.my@rollflexmfg.com](mailto:sales.my@rollflexmfg.com)

Web: [www.rollflexmfg.com](http://www.rollflexmfg.com)

**Because the printed copy is updated slowly,  
so for the newest product informations, pls refer to the official website.**